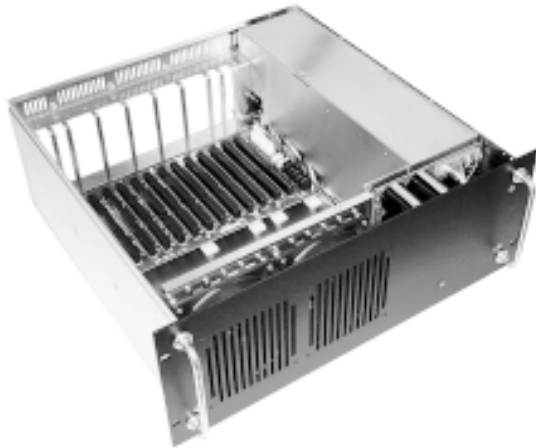


# Logosol Large Chassis



## Technical specification:

### Power supply:

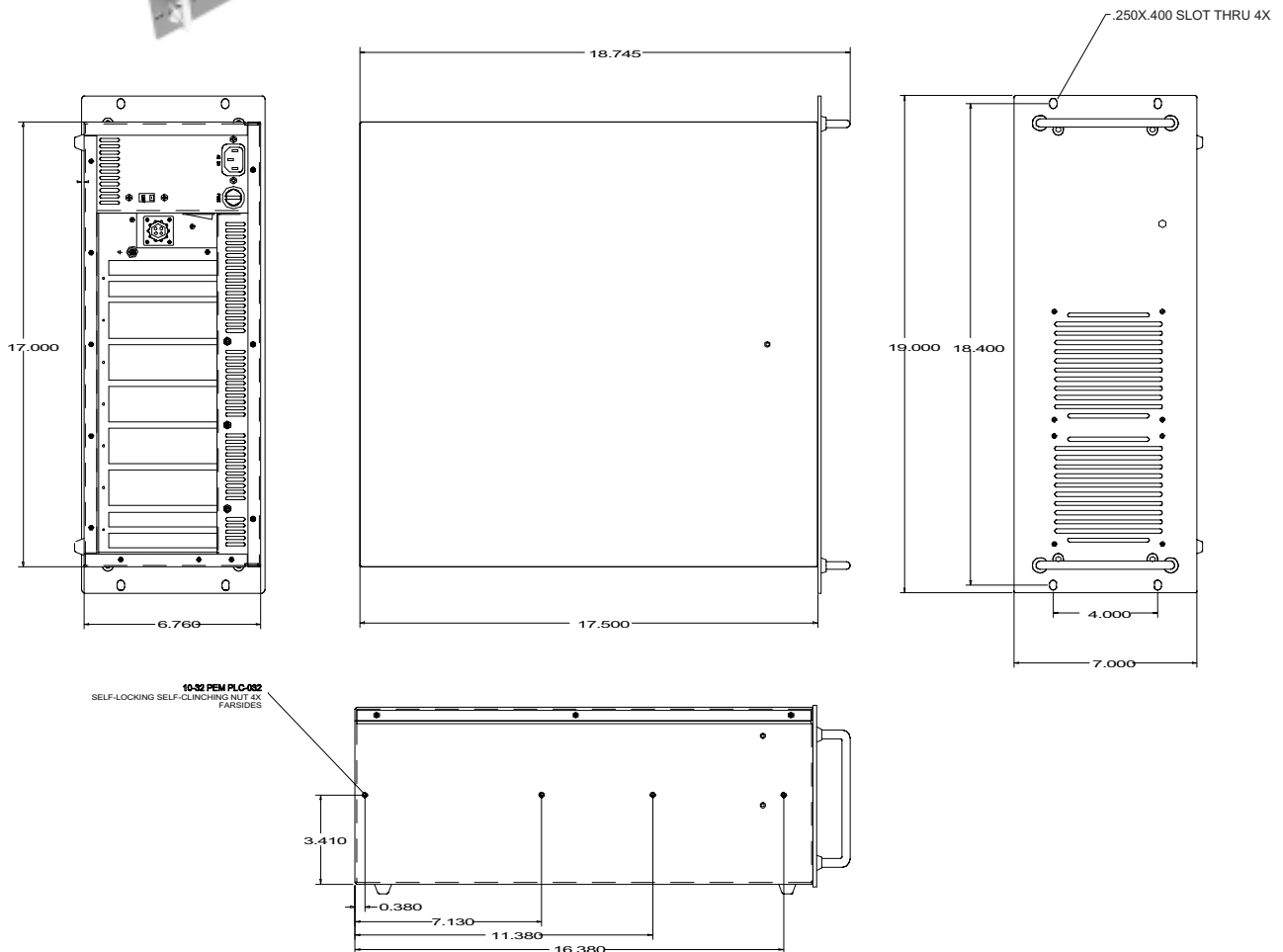
- Main power: 115/230VAC
- Computer power supply:
  - +5V/20A      +12V/4A
  - 5V/0.5A     -12V/0.3A
- Motor power supply:
  - Option 1: 60V/10A/16A PEAK (10 sec.)
  - Option 2: 2X60V/10A/16A ISOLATED

### Bus board options:

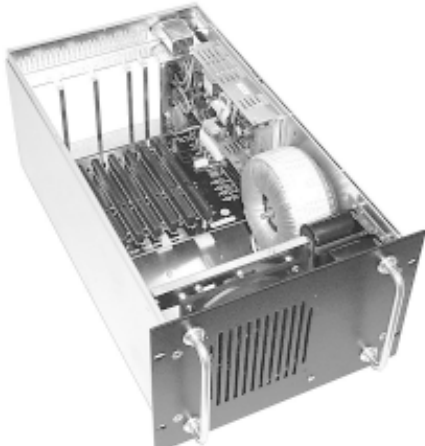
- 8 slot
- 14 slot
- 14 slot split (8+6 for two systems in one chassis)

### Dimensions:

- 17" x 17.5" x 6.76" (W x L x H)
- Weight: 35/43 LBS



# Logosol Small Chassis



## Technical specification:

### **Power supply:**

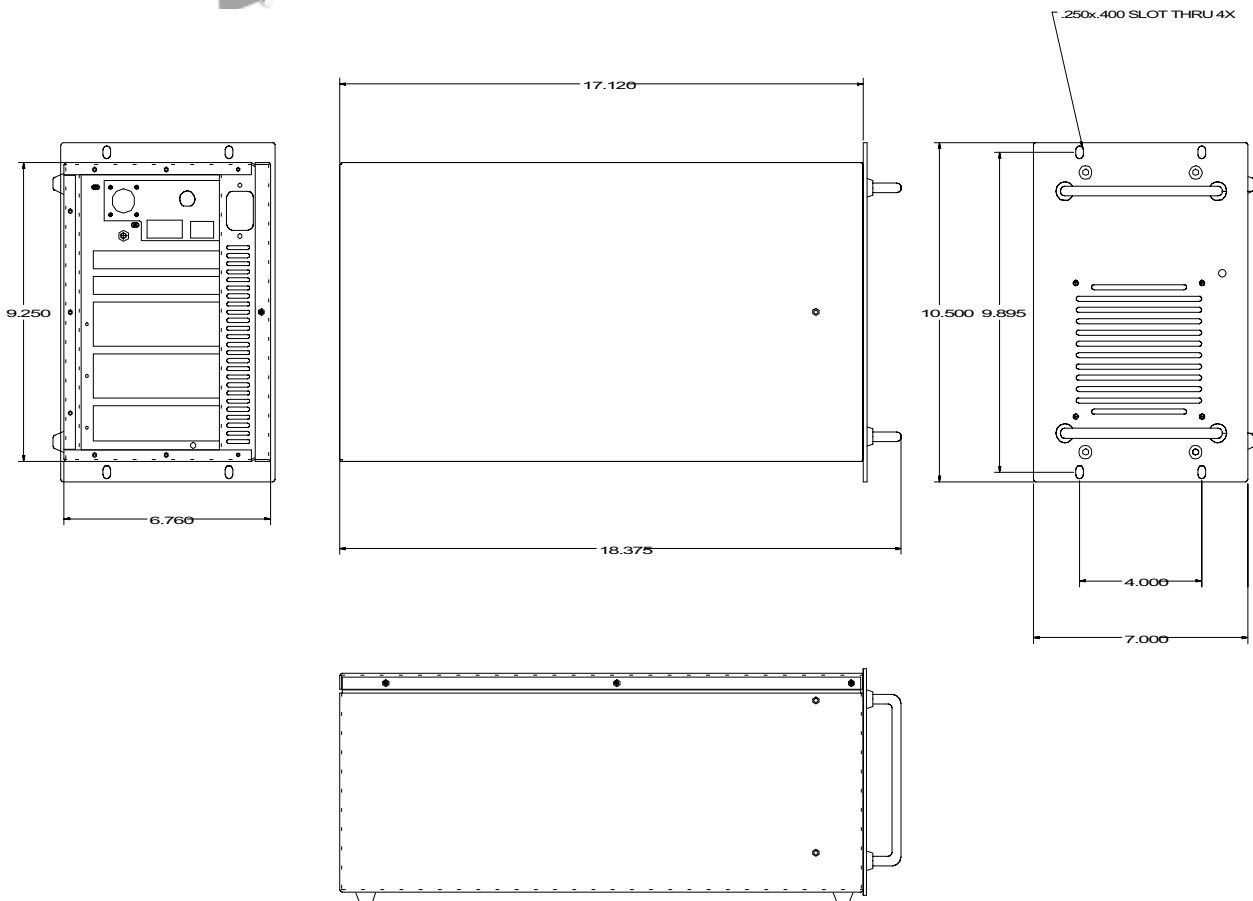
- Main power: 115/230VAC
- Computer power supply:
  - +5V/6A    +12V/3.5A
  - 5V/0.5A   -12V/0.5A
- Motor power supply:
  - Option 1: 60V/10A/16A PEAK (10 sec.)
  - Option 2: 60V/16A/25A PEAK (10 sec.)

### **Bus board:**

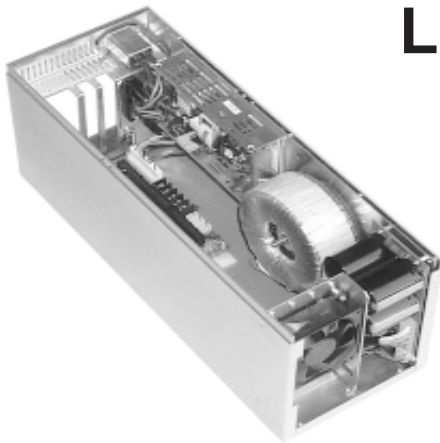
- 8 slot

### **Dimensions:**

- 9.250" x 17.120" x 6.760" (W x L x H)
- Weight: 24/31 LBS



# Logosol Compact Chassis



## Technical specification:

### **Power supply:**

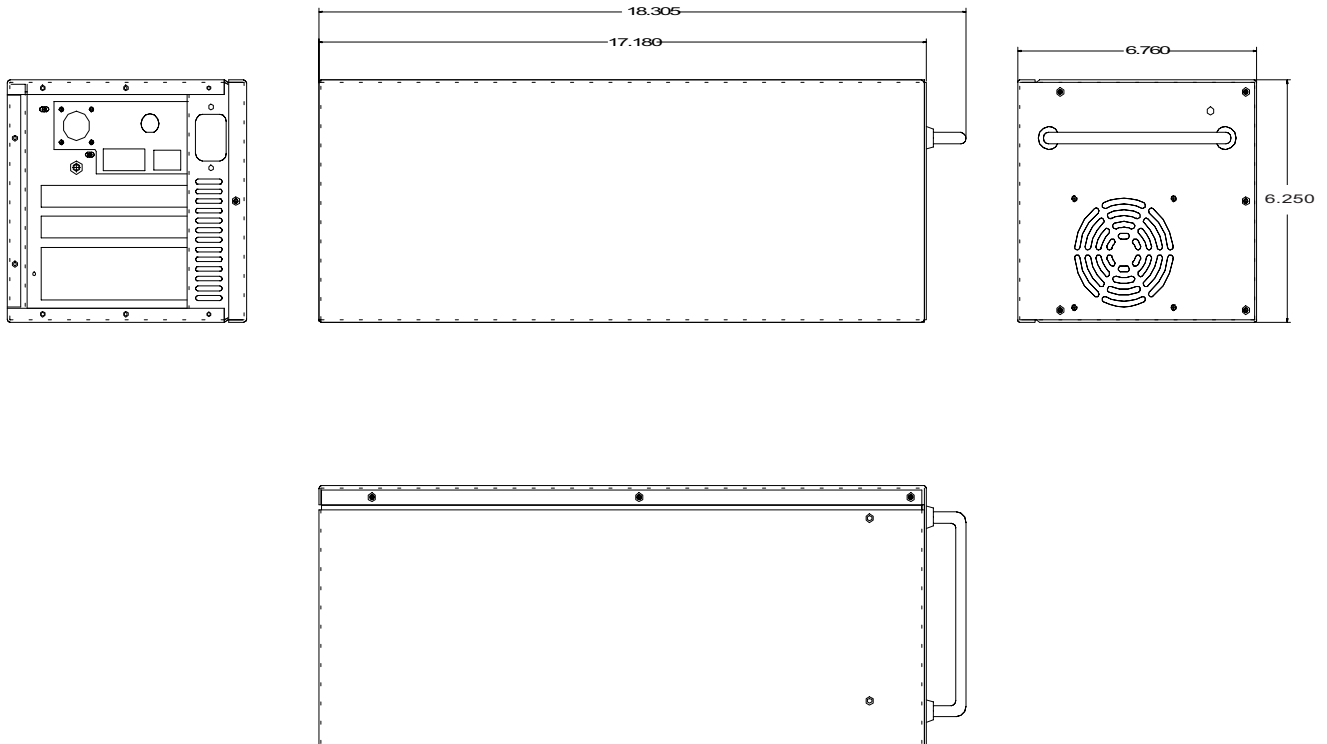
- Main power: 115/230VAC
- Computer power supply:
  - +5V/6A    +12V/3.5A
  - 5V/0.5A   -12V/0.5A
- Motor power supply:
  - 60V/10A/16A PEAK (10 sec.)

### **Bus board:**

- 4 slot

### **Dimensions:**

- 6.250" x 17.180" x 6.760" (W x L x H)
- Weight: 18 LBS



# Logosol Mini Chassis



## Technical specification:

### **Power supply:**

- Main power: 18÷36VDC
- Computer power supply:
  - +5V/7A    +12V/2.5A
  - 5V/0.3A   -12V/0.5A
- Motor power supply:
  - External 24÷60VDC

### **Bus board:**

- 4 slot

### **Dimensions:**

- 5.960" x 16.720" x 5.960" (W x L x H)
- Weight: 8 LBS

